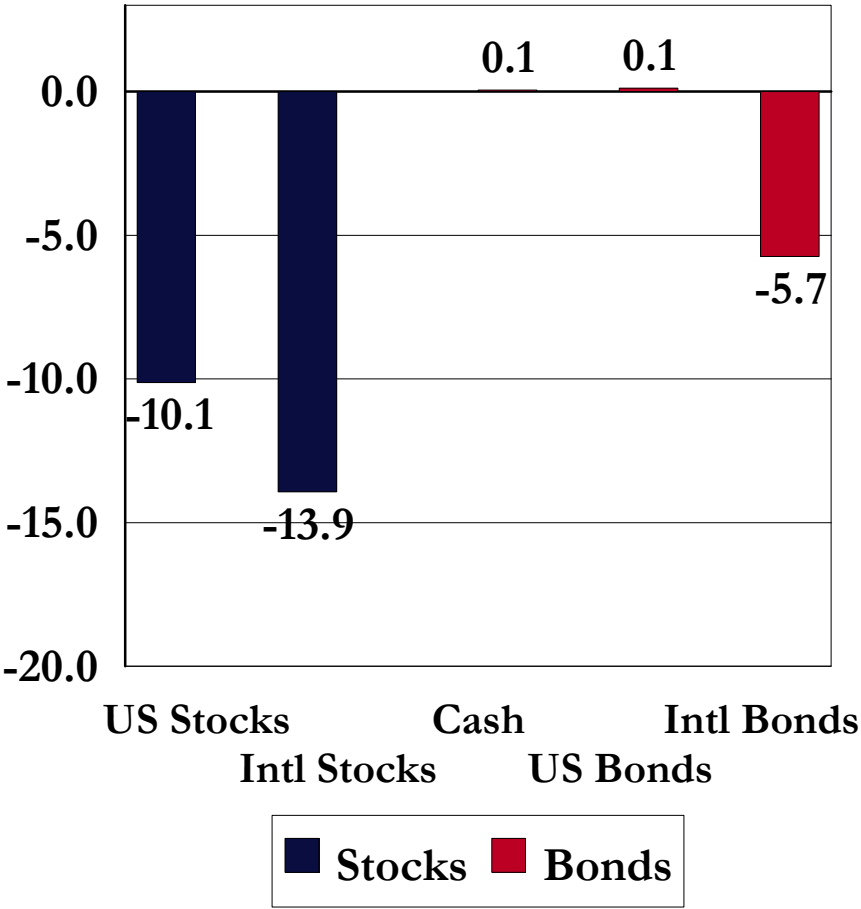


US Equity Market Review

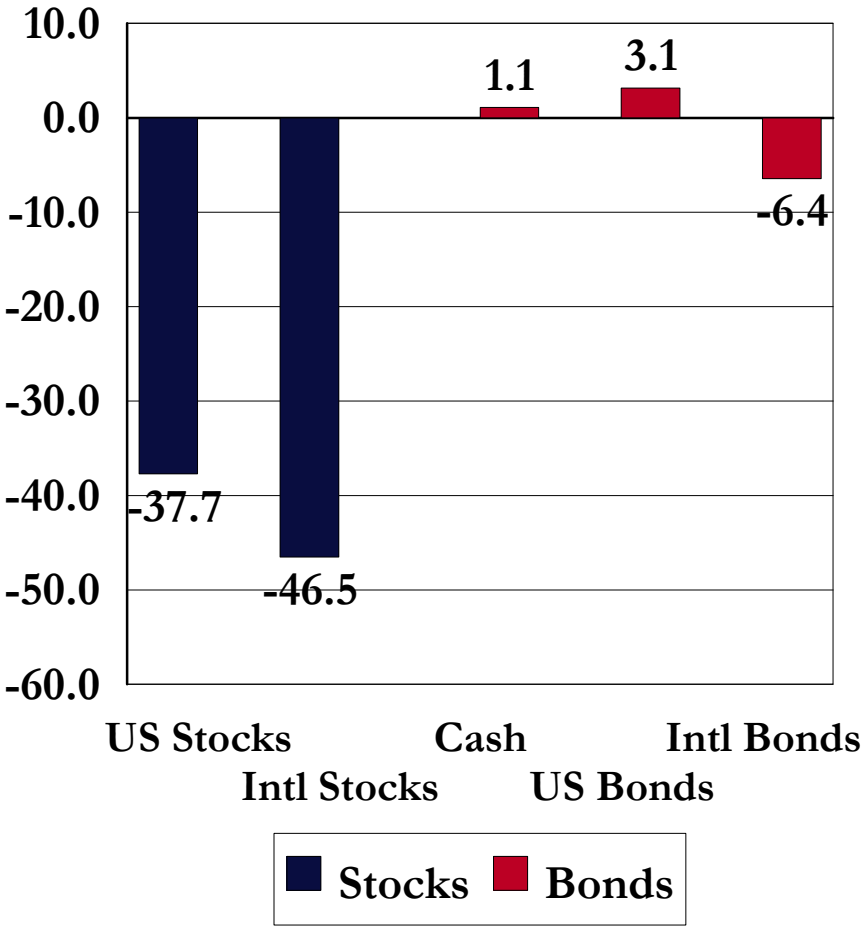
March 31, 2009

Asset Class Returns

3 Months Ending 3/31/2009

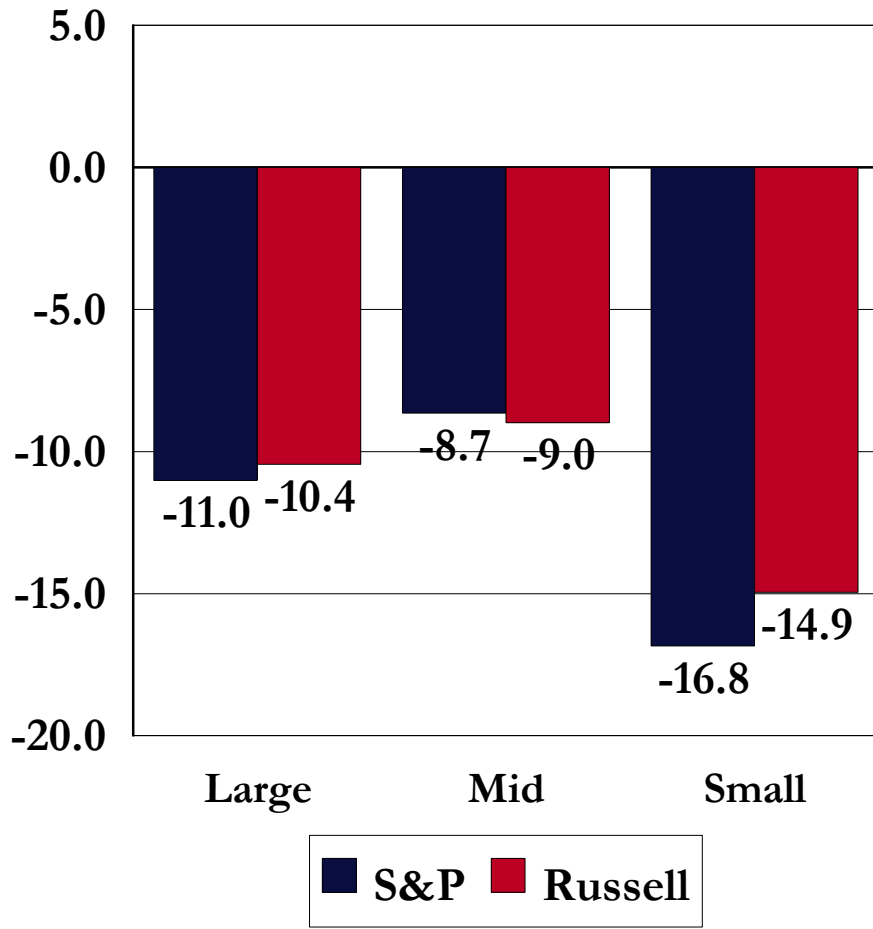


1 Year Ending 3/31/2009

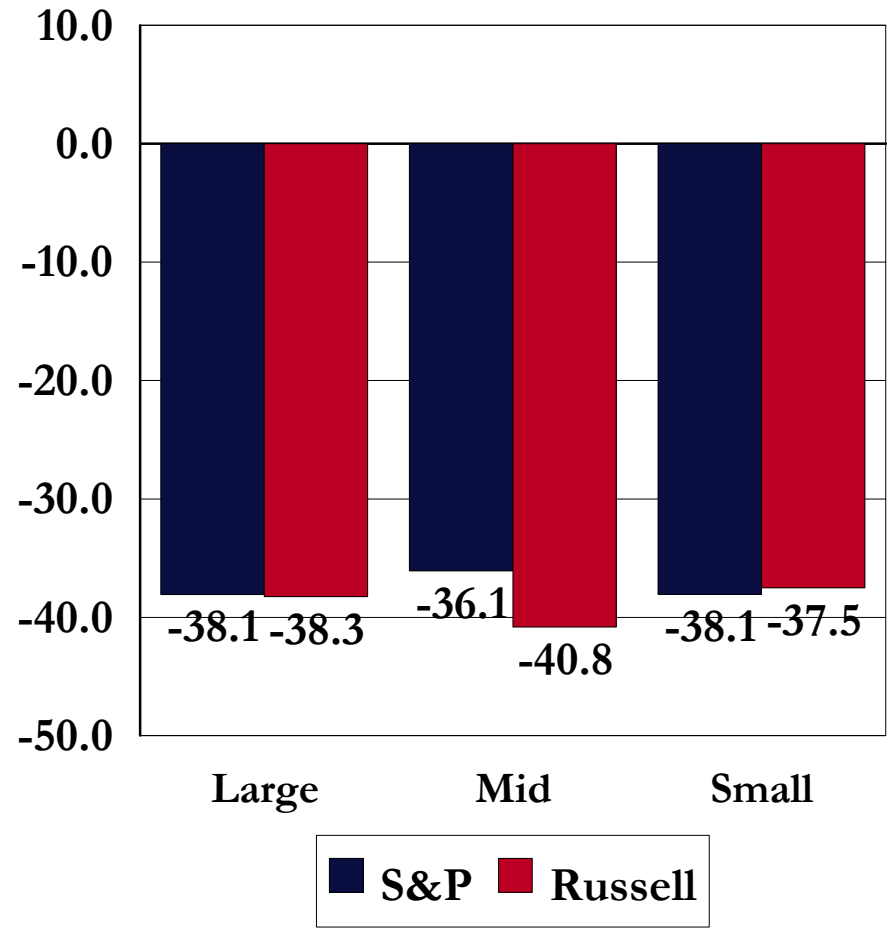


Equity Style Returns: By Company Size

3 Months Ending 3/31/2009

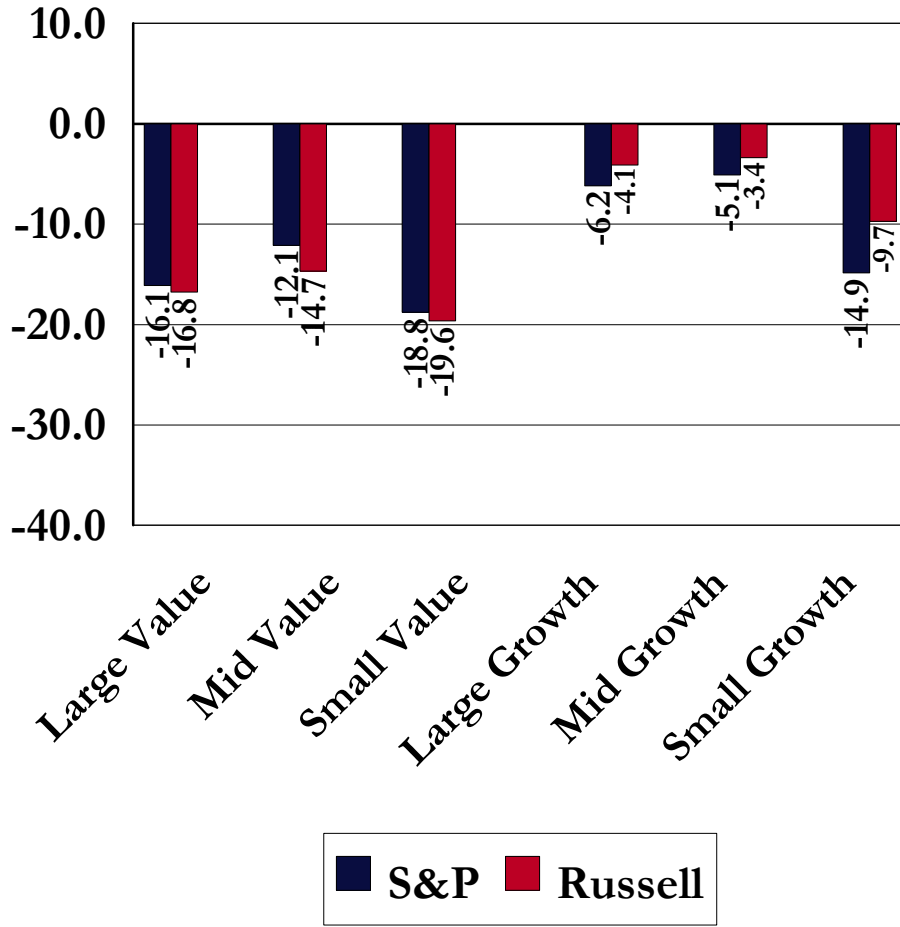


1 Year Ending 3/31/2009

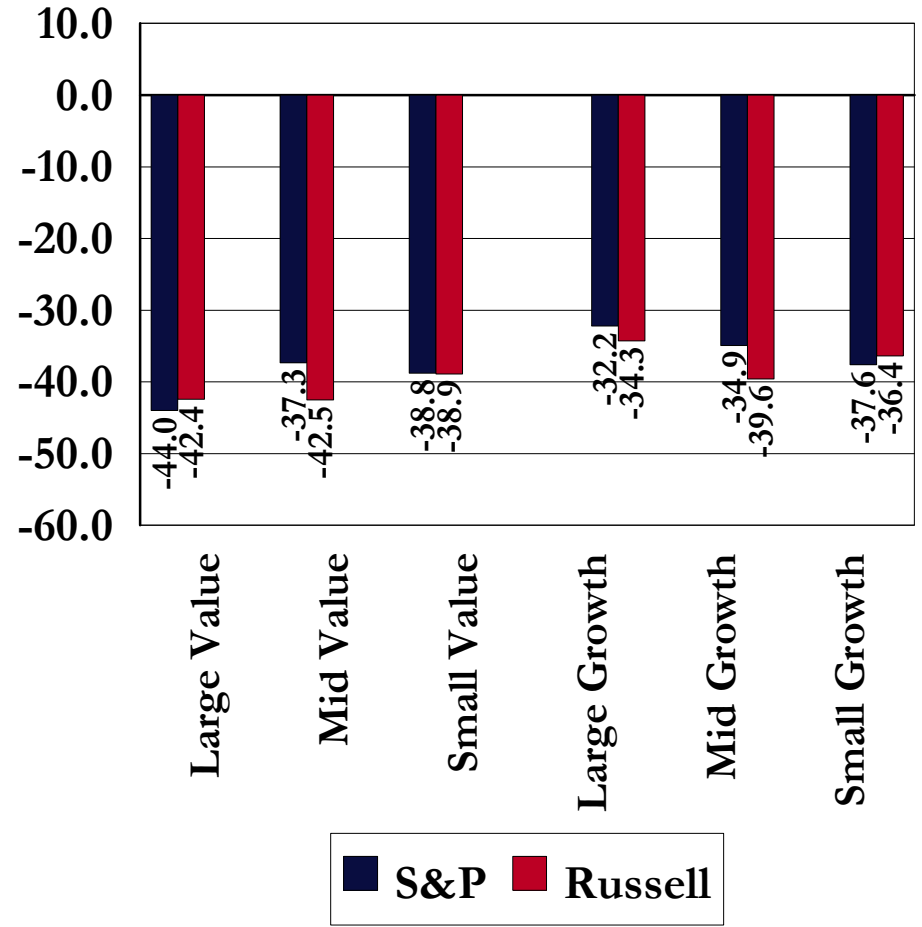


Equity Style Returns: By Investment Approach

3 Months Ending 3/31/2009

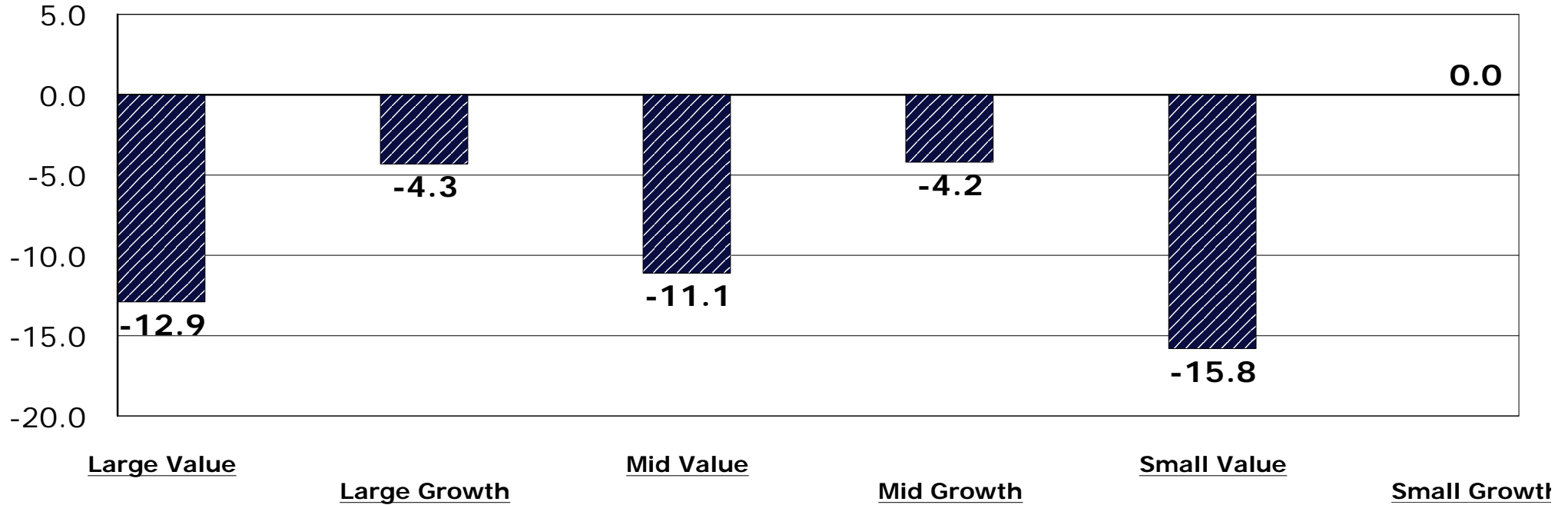


1 Year Ending 3/31/2009



JIC Style Peer Group Returns 3 Months Ending March 31, 2009

Peer Group Medians

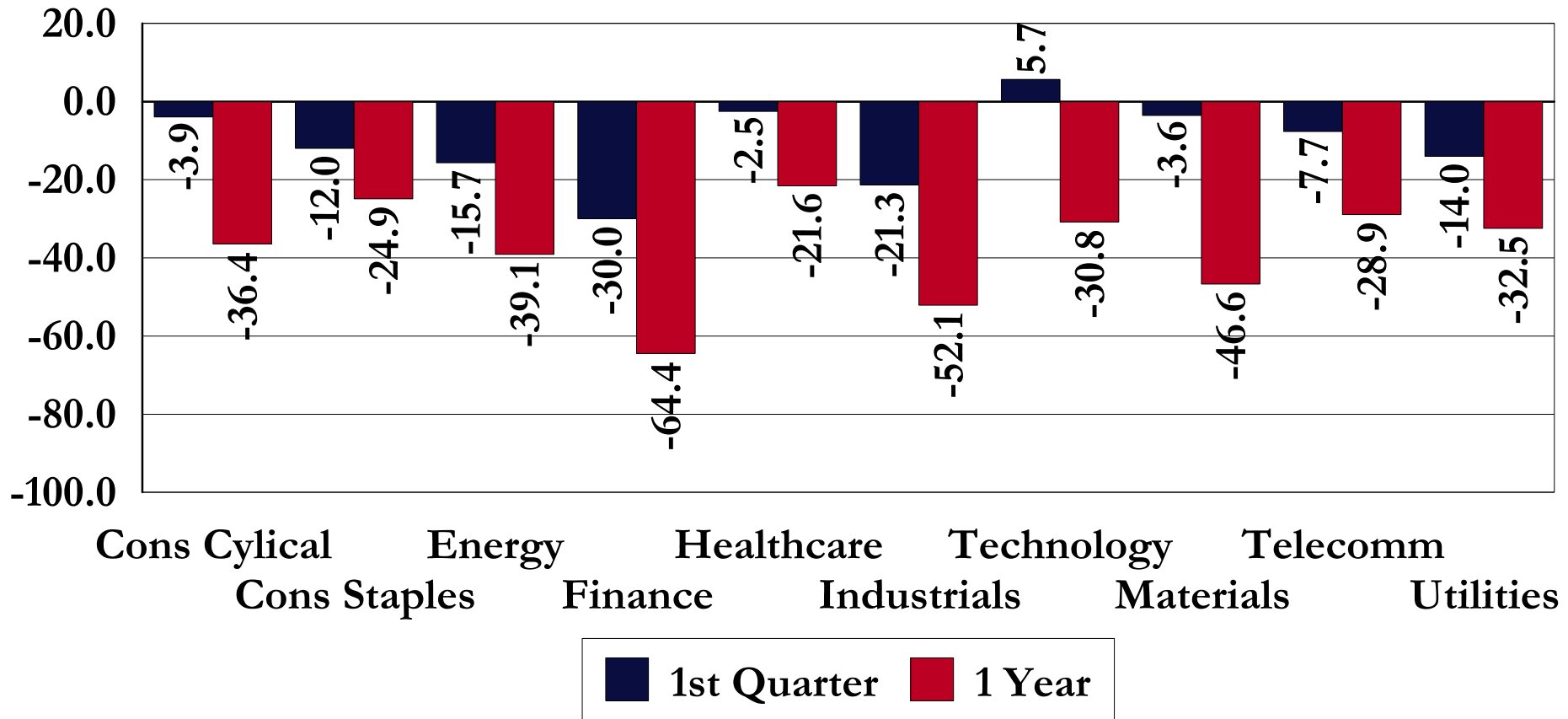


	<u>Large Value</u>	<u>Large Growth</u>	<u>Mid Value</u>	<u>Mid Growth</u>	<u>Small Value</u>	<u>Small Growth</u>
5th	-5.9	2.1	-3.7	-0.7	-7.1	0.0
25th	-10.9	-1.9	-9.0	-2.7	-12.9	0.0
50th	-12.9	-4.3	-11.1	-4.2	-15.8	0.0
75th	-15.3	-7.2	-13.6	-8.1	-18.2	0.0
95th	-17.4	-10.8	-19.3	-11.1	-21.2	0.0

US Stock Market Returns: By Sector

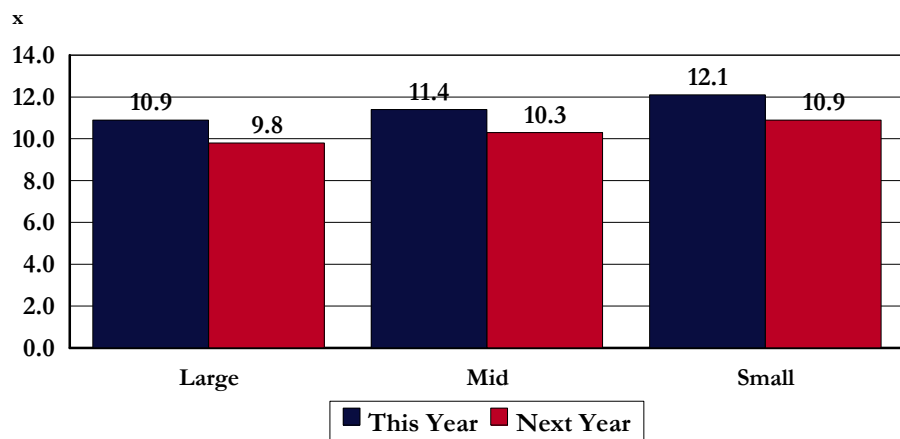
Periods Ending March 31, 2009

Percent Return

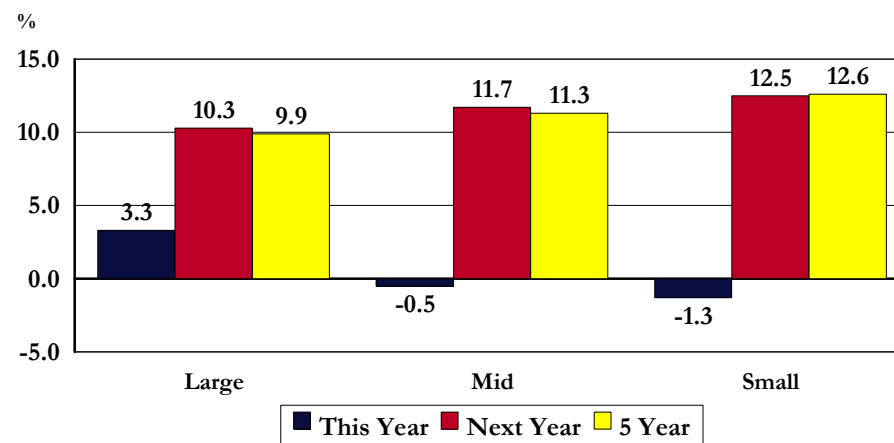


US Stock Market Fundamentals: By Company Size

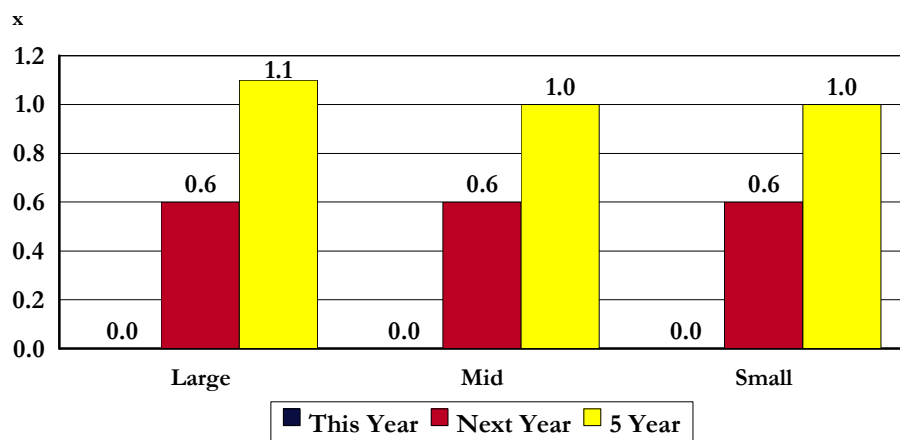
Price / Earnings Based on Future Earnings



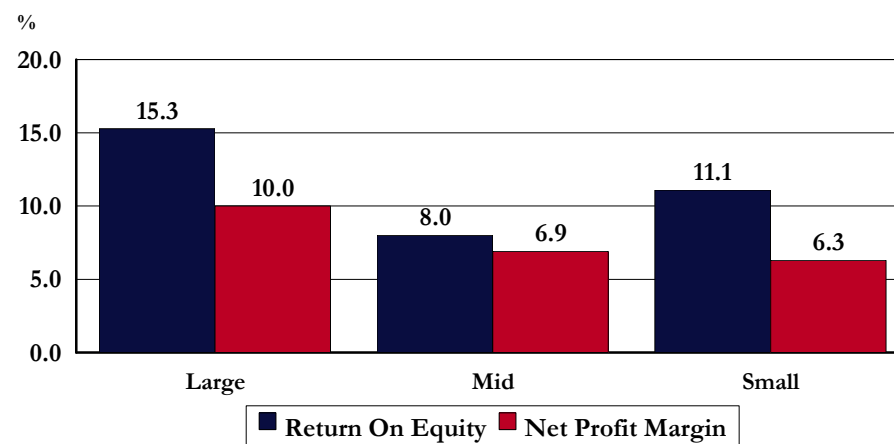
Expected Earnings Growth



Price/Earnings to Expected Growth Rates



Profitability

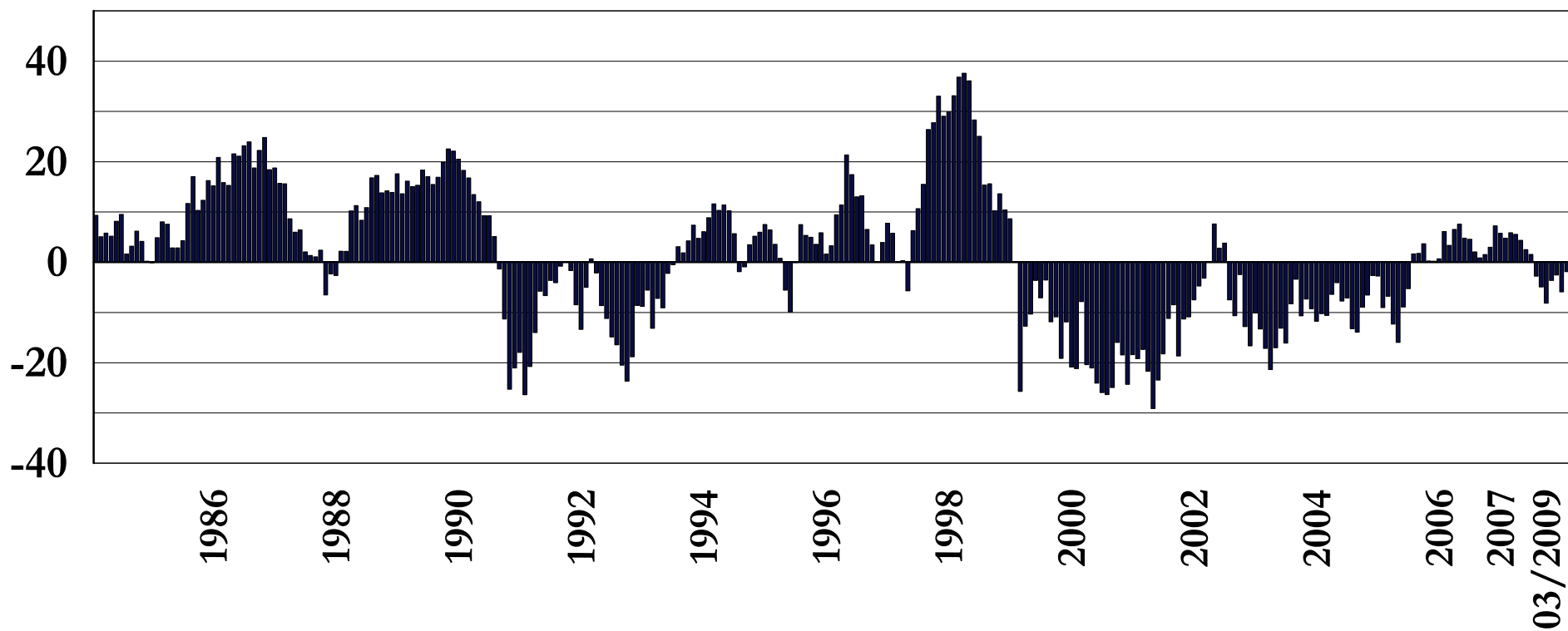


US Stock Market: Company Size Technical Analysis

Rolling 12-Month Return Difference

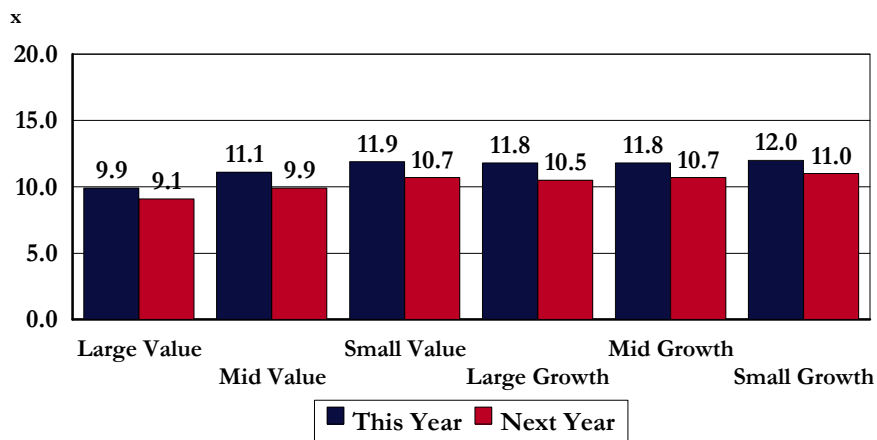
Return of Large - Small Cap Stocks (SP 500 - SP 600)

% Return Difference

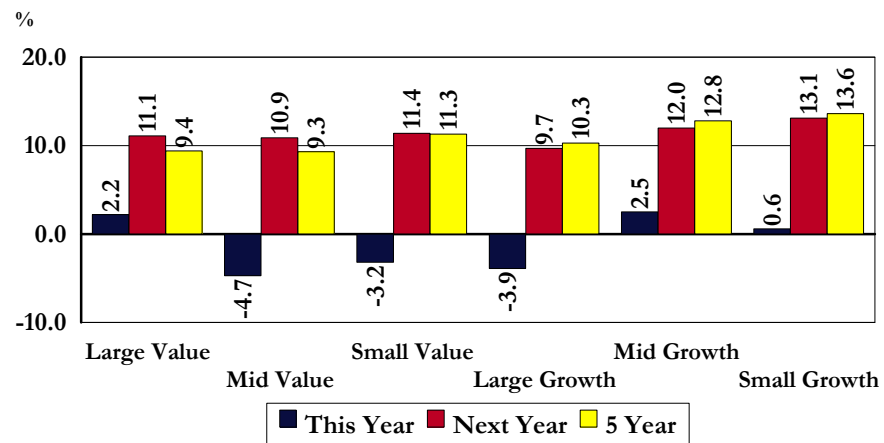


US Stock Market Fundamentals: By Investment Approach

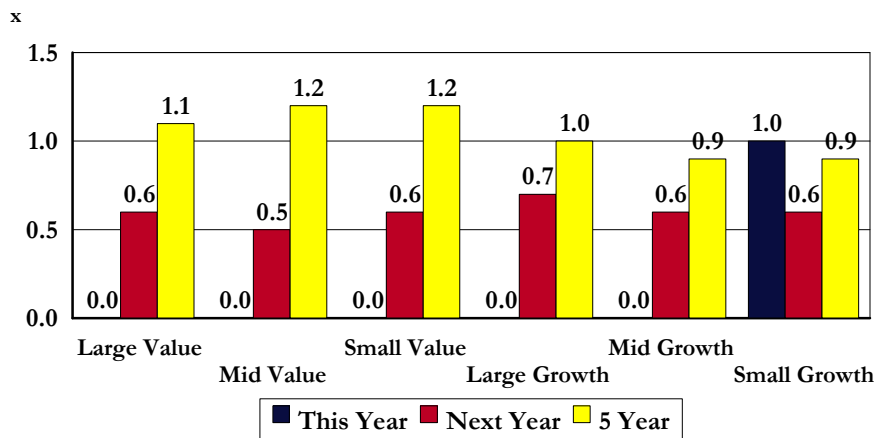
Price / Earnings Based on Future Earnings



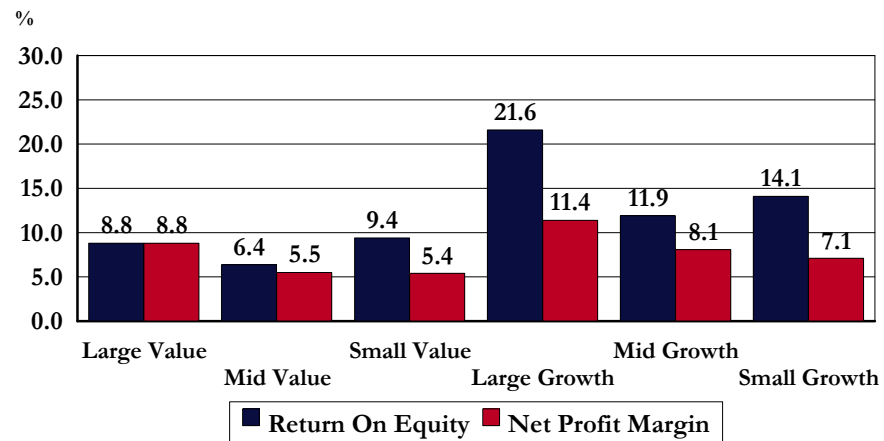
Expected Earnings Growth



Price/Earnings to Expected Growth Rates



Profitability



US Stock Market: Investment Approach Technical Analysis

Rolling 12-Month Return Difference

Return of Large Value - Large Growth Stocks (SP LCV - SP LCG)

% Return Difference

