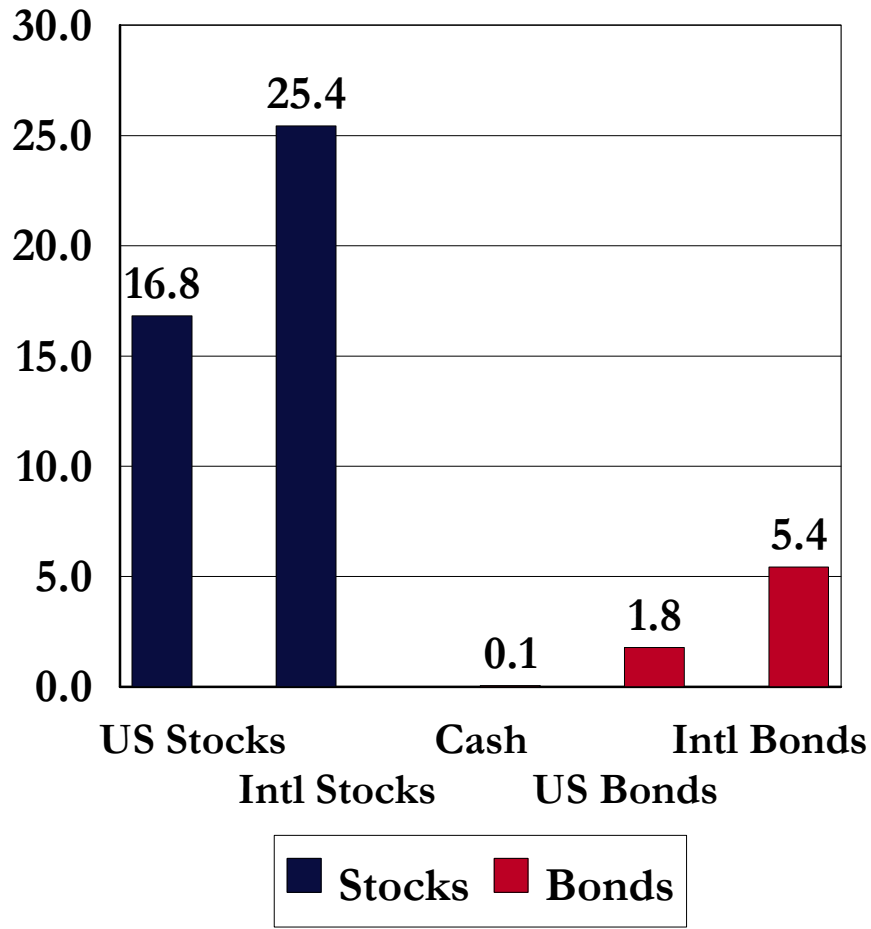


US Equity Market Review

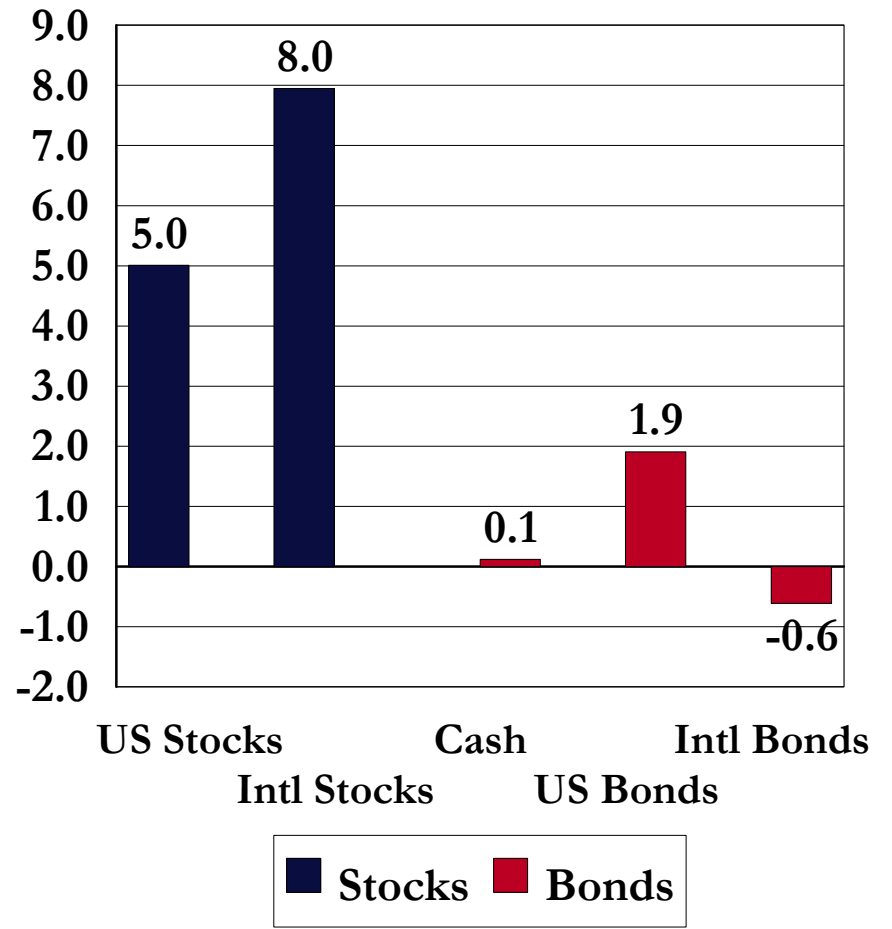
June 30, 2009

Asset Class Returns

3 Months Ending 6/30/2009

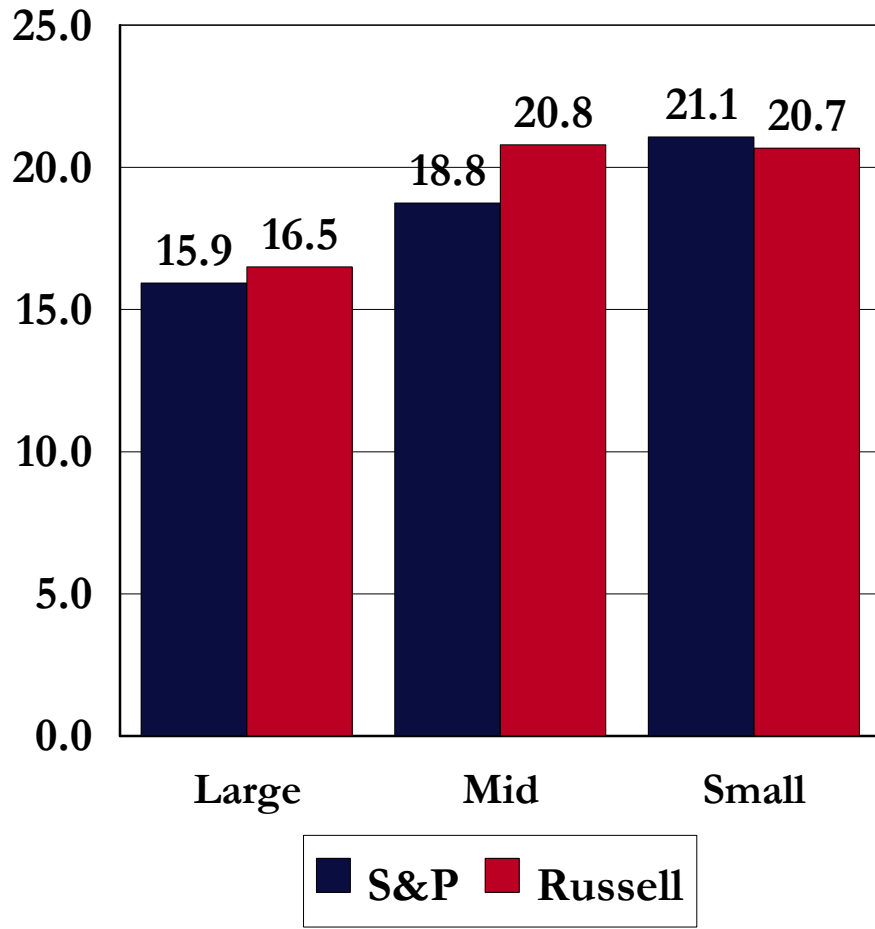


Year-to-Date Ending 6/30/2009

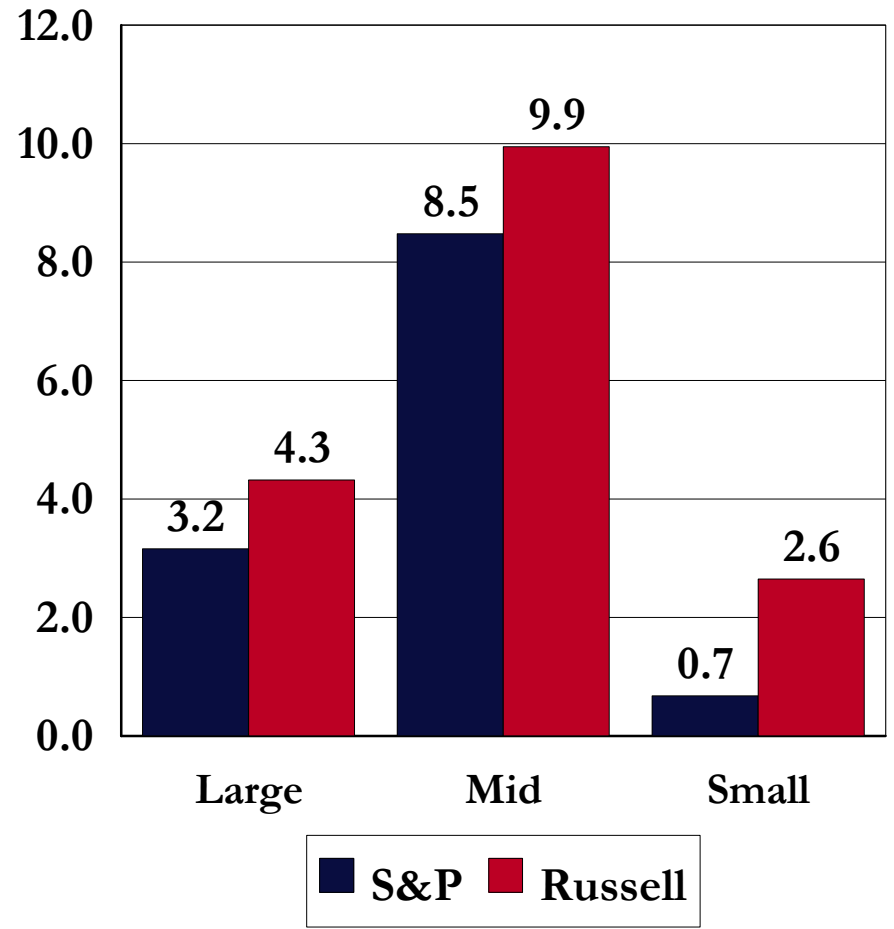


Equity Style Returns: By Company Size

3 Months Ending 6/30/2009

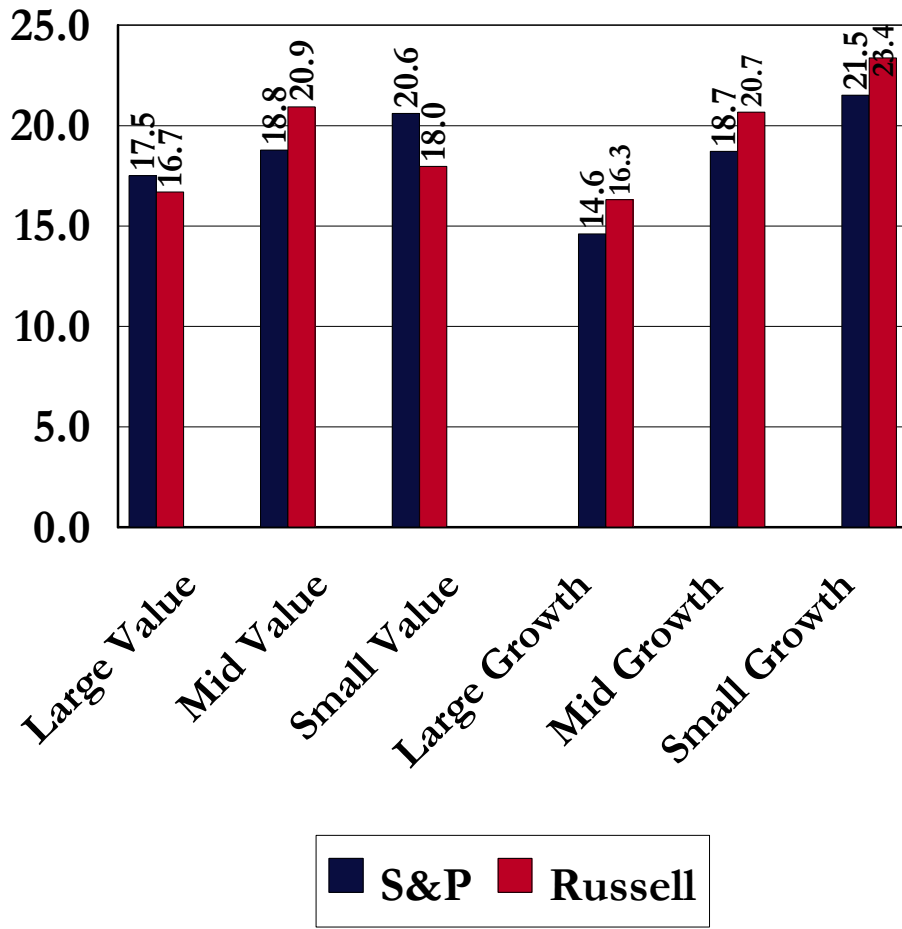


Year-to-Date Ending 6/30/2009

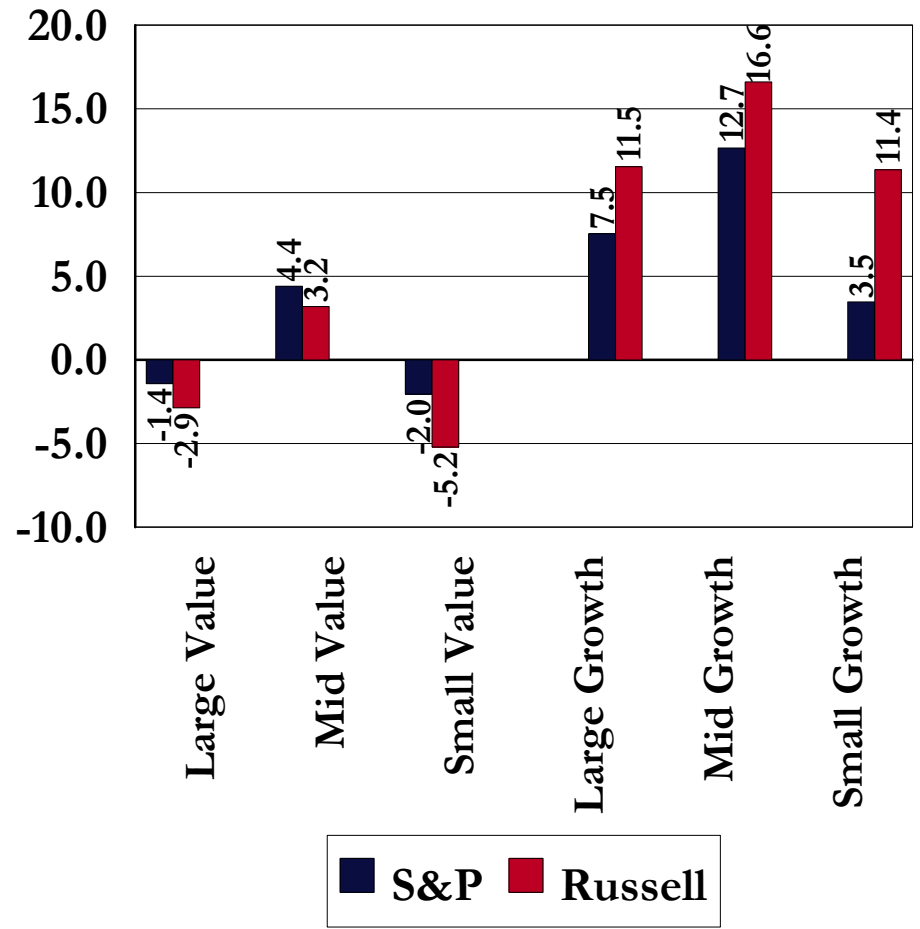


Equity Style Returns: By Investment Approach

3 Months Ending 6/30/2009

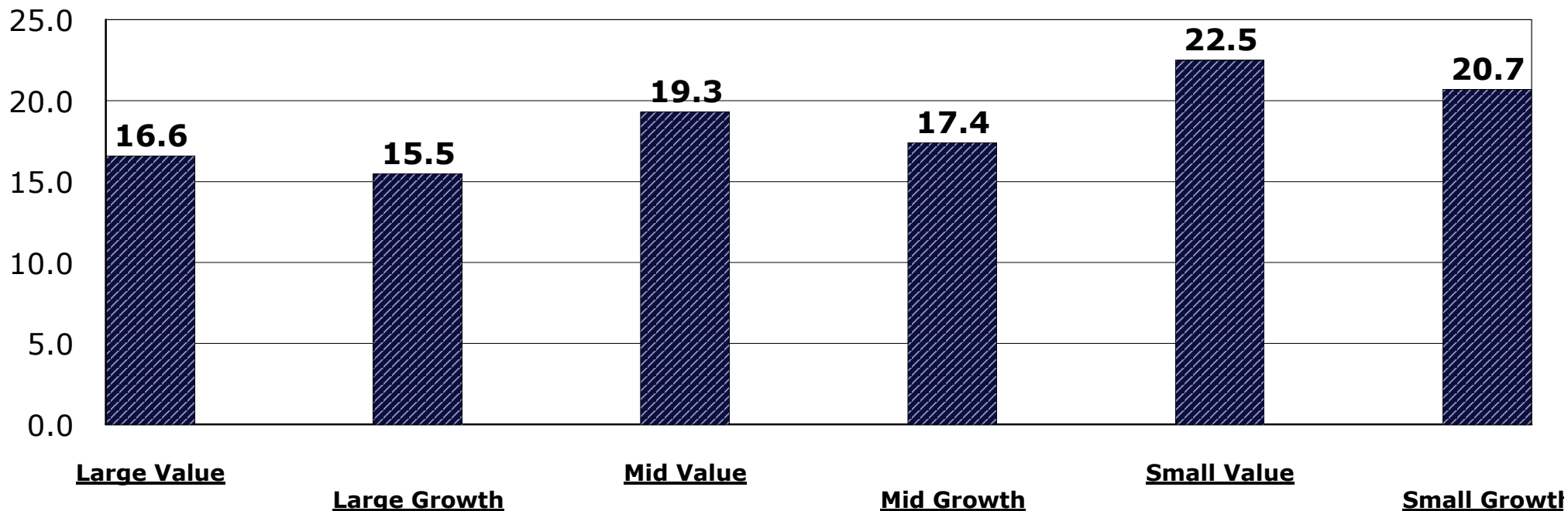


Year-to-Date Ending 6/30/2009



JIC Style Peer Group Returns 3 Months Ending June 30, 2009

Peer Group Medians

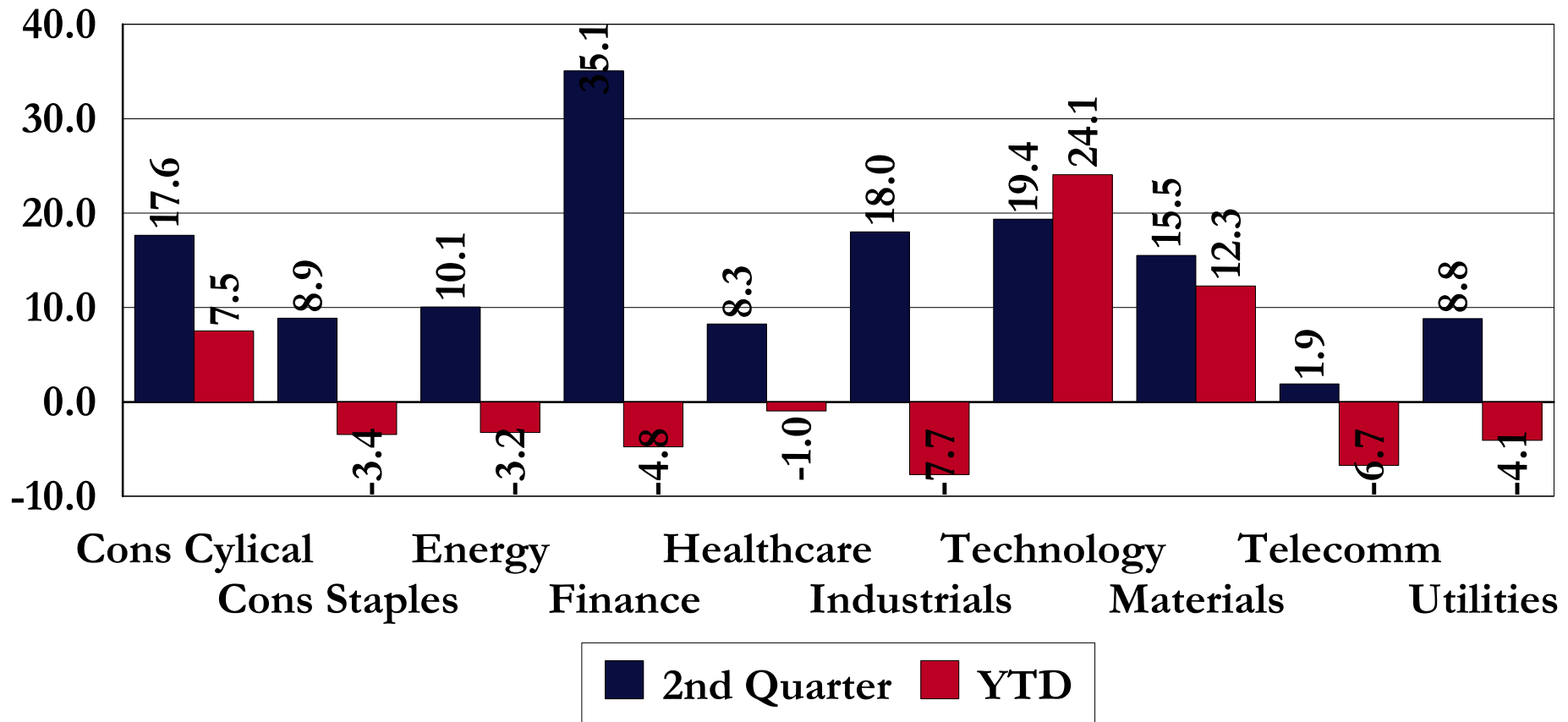


5th	27.5	22.4	35.6	26.8	41.3	34.8
25th	19.2	18.4	22.1	20.7	26.2	24.6
50th	16.6	15.5	19.3	17.4	22.5	20.7
75th	14.1	13.2	16.8	14.0	18.1	18.1
95th	10.0	9.2	12.2	5.7	14.3	13.1

US Stock Market Returns: By Sector

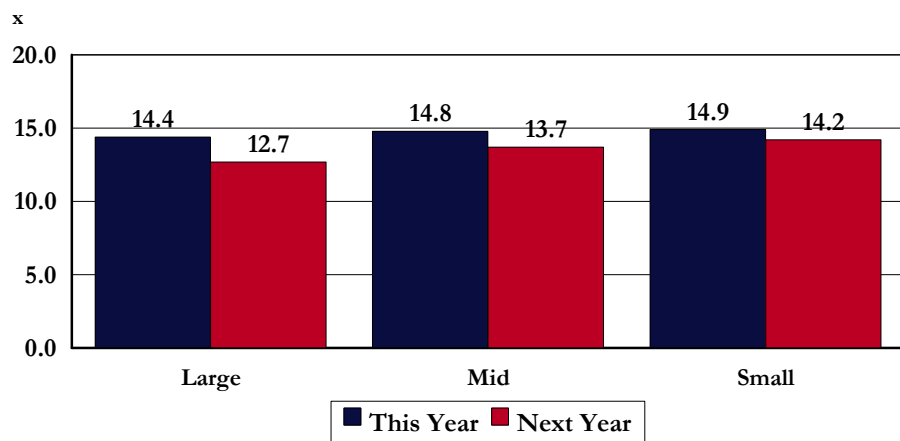
Periods Ending June 30, 2009

Percent Return

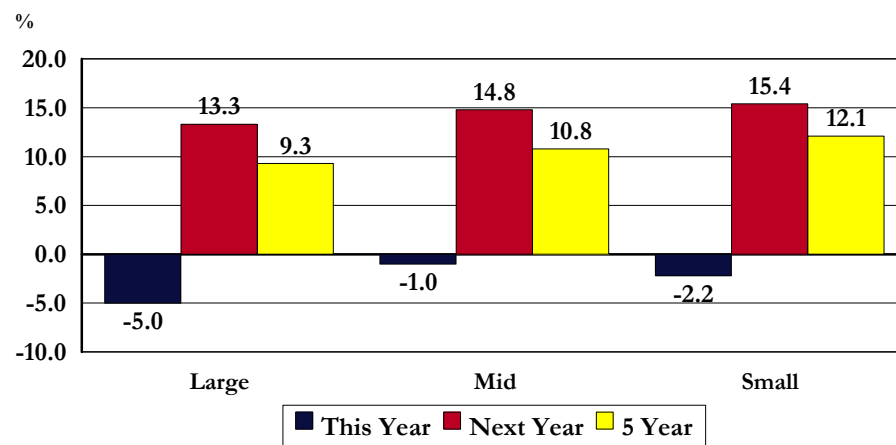


US Stock Market Fundamentals: By Company Size

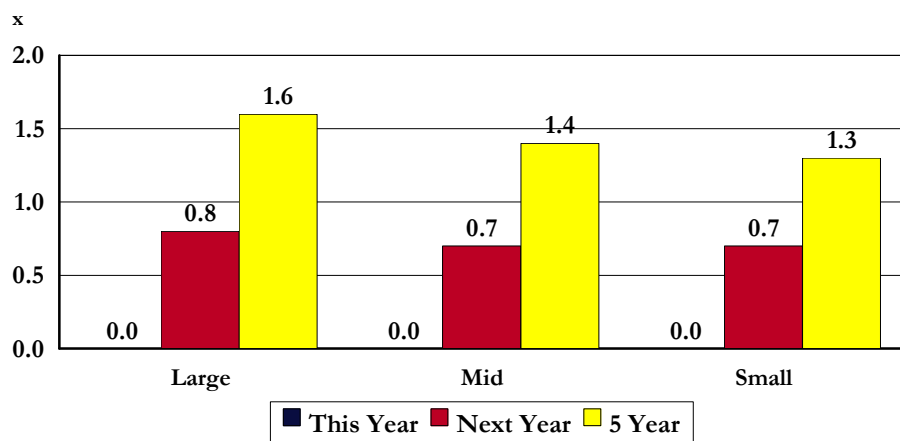
Price / Earnings Based on Future Earnings



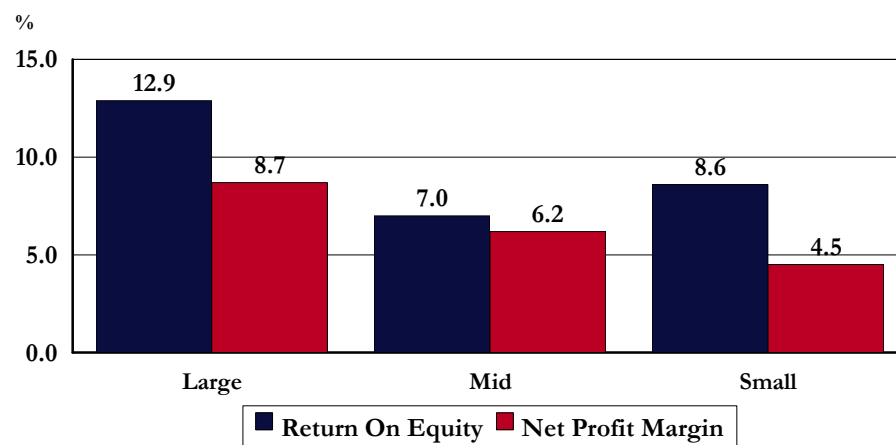
Expected Earnings Growth



Price/Earnings to Expected Growth Rates



Profitability

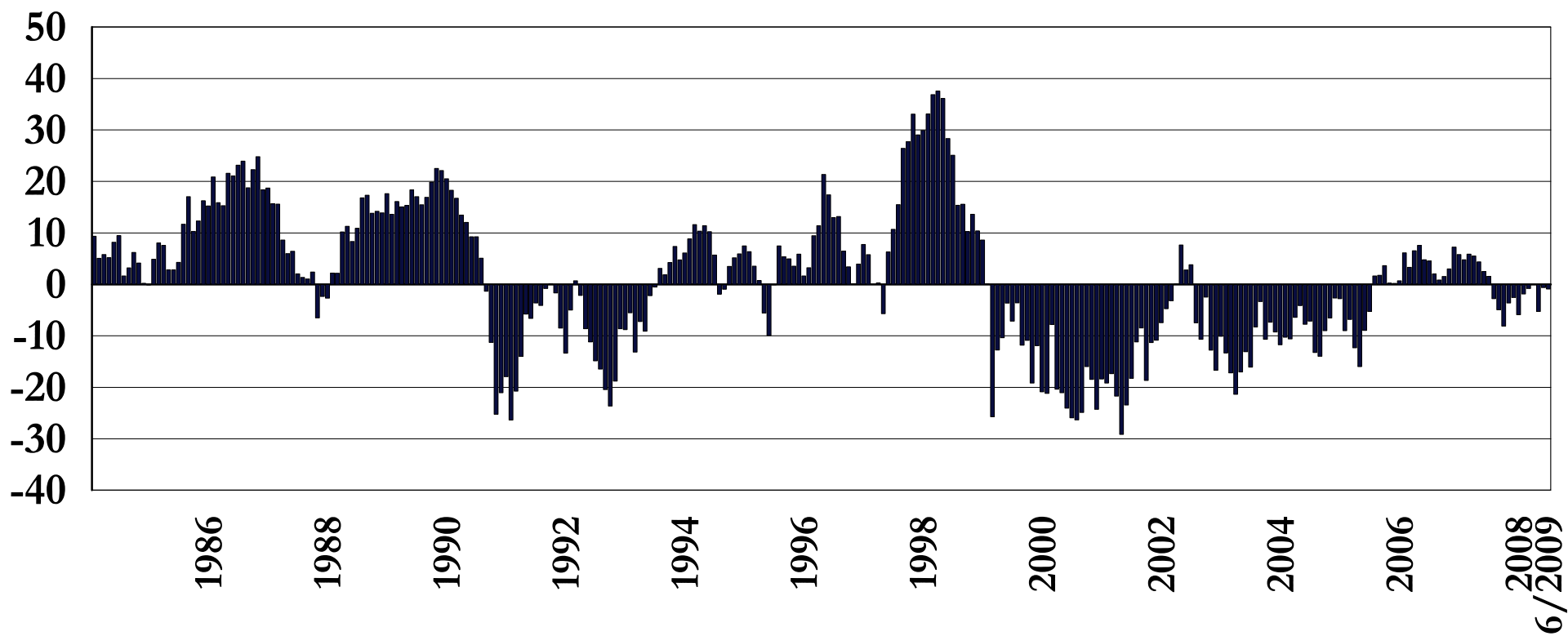


US Stock Market: Company Size Technical Analysis

Rolling 12-Month Return Difference

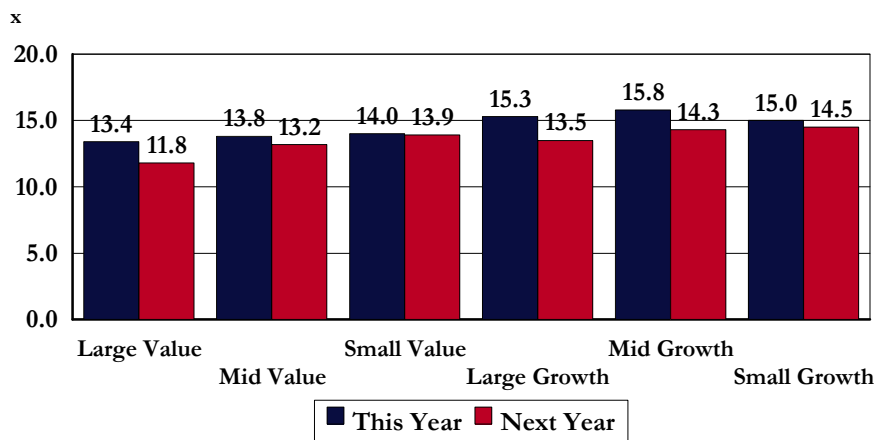
Return of Large - Small Cap Stocks (SP 500 - SP 600)

% Return Difference

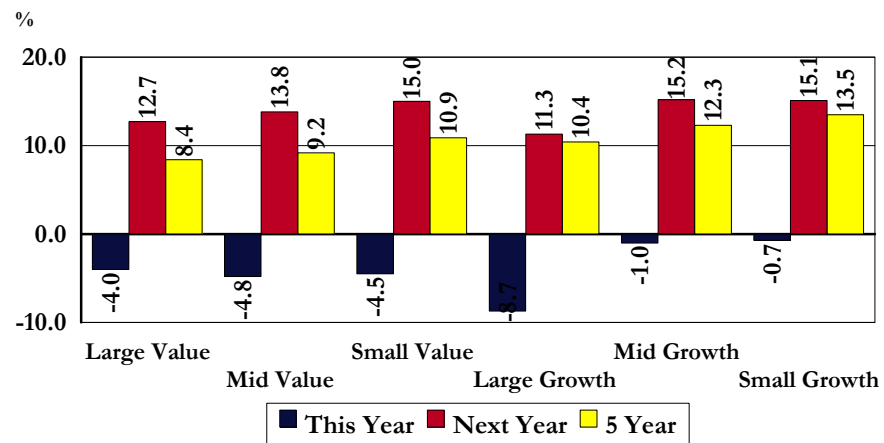


US Stock Market Fundamentals: By Investment Approach

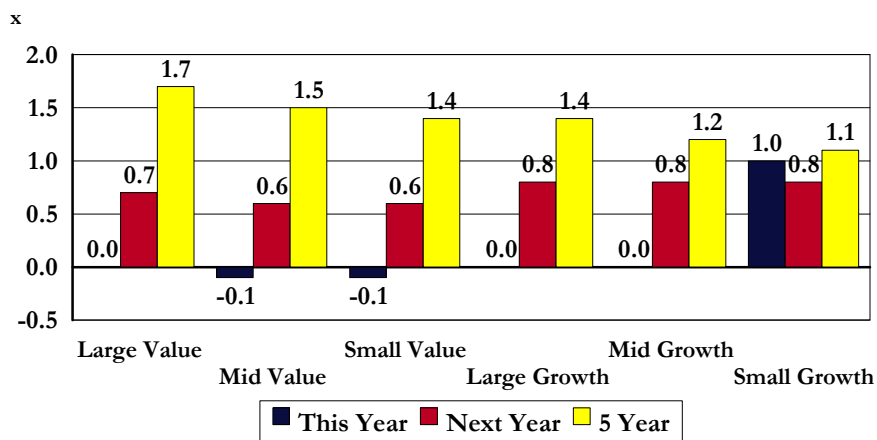
Price / Earnings Based on Future Earnings



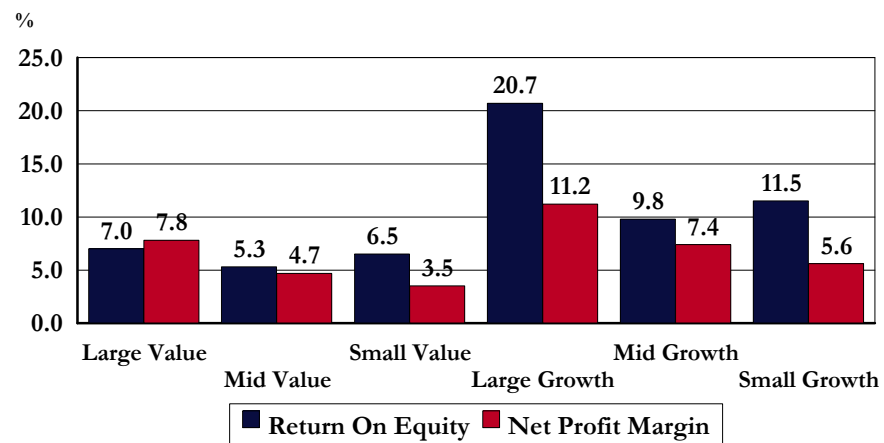
Expected Earnings Growth



Price/Earnings to Expected Growth Rates



Profitability



US Stock Market: Investment Approach Technical Analysis

Rolling 12-Month Return Difference

Return of Large Value - Large Growth Stocks (SP LCV - SP LCG)

% Return Difference

